

FOR LEASE

160 N. Huntington Road
CASTLE ROCK WA 98611

PROPERTY DEMOGRAPHICS

SUITE SIZE:	8,352 Square Feet
PRICE:	\$3,000.00 per calendar month
SUITE SIZE:	1,686 Square Feet
PRICE:	\$750.00 per calendar month
TERMS:	NNN, All other terms based on Lease Documentation
POPULATION:	6,164 - 3 Mile 9,502 - 5 Mile
HOUSEHOLDS:	2,390 - 3 Mile 3,644 - 5 Mile
AVE. INCOME:	\$59,105 - 3 Mile \$61,871 - 5 Mile



PROPERTY FEATURES

- 2 retail spaces available with co-tenant which would compliment any business - Curves, Castle Rock Bakery & Grant Surveying
- Large space has loading dock, 3 phase power, gas furnace & air conditioning as well as 2 ADA compliant bathrooms
- Smaller space is well presented, contains private office - ideal for professional or retail use



The information contained herein has been obtained from sources we understand to be reliable. Whilst we do not doubt its accuracy it has not been verified & we make no guarantees, warranty or representations about it. Any projections, opinions, assumptions or estimates used are for example only. You & your advisors should conduct a careful independent investigation of the property to determine the property's satisfaction to your needs.
© Woodford Commercial Real Estate.



Woodford
Commercial Real Estate

For Further Information
Please Contact

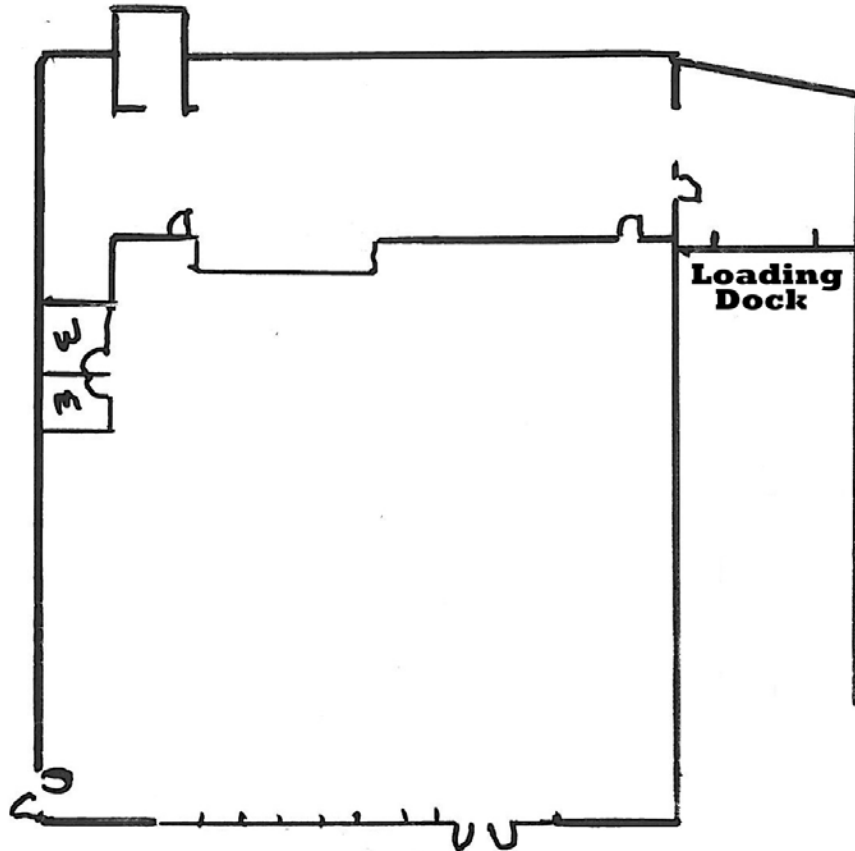
HAL PALMER | Associate Broker
hal@woodfordcre.com
Suite 208, 1717 Olympia Way
LONGVIEW WA 98632

P 360.501.5500 ■ F 360.501.6051
www.woodfordcre.com

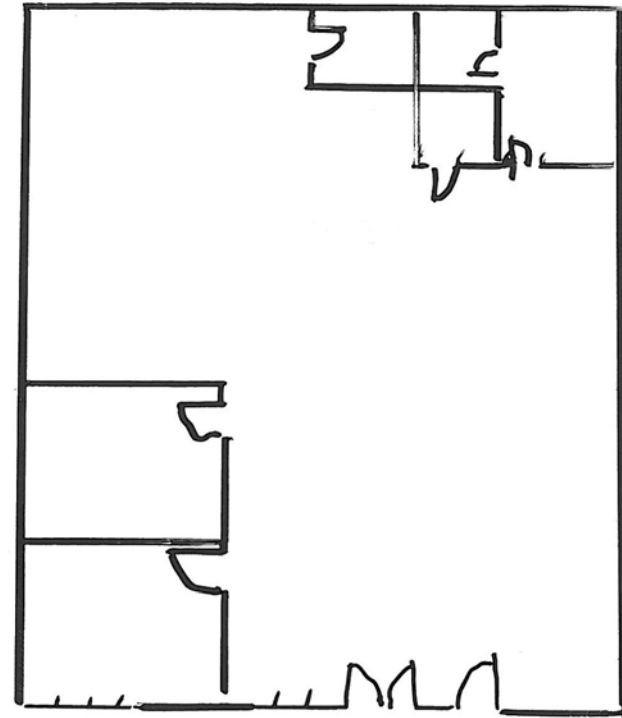
FOR LEASE

160 N. Huntington Road
CASTLE ROCK WA 98611

FLOOR PLANS



8,352SF - 160-H N Huntington Drive



1,686SF - 160-E N Huntington Road



For Further Information Please Contact

HAL PALMER | Associate Broker

hal@woodfordcre.com

Suite 208, 1717 Olympia Way,

LONGVIEW WA 98632

P 360.501.5500 ■ F 360.501.6051

www.woodfordcre.com