

# FOR LEASE

2305 Columbia Heights Road  
Longview, WA 98632

## PROPERTY DEMOGRAPHICS

SUITE SIZE:	10,200 Square Feet
PRICE:	\$4,500.00 per calendar month Great parking and turn around for big trucks. Easy access to Westside Highway!
TERMS:	NNN, All other terms based on Lease Documentation
PARCEL ID:	1039401
TAXES:	Prorated share
INSURANCE:	Prorated share

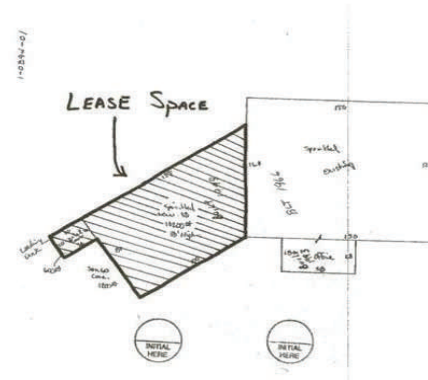


## PROPERTY FEATURES

- Single 22' high space available with small office
- Loading dock, 3 phase power, gas furnace
- Variety of uses include: Storage, Manufacturing with retail shop or office, Hospitals, medical clinics, business or professional offices; storage of business records and files, and of inventory held for resale, Printing plants, Storage or sales of automobiles.

The information contained herein has been obtained from sources we understand to be reliable. Whilst we do not doubt its accuracy it has not been verified & we make no guarantees, warranty or representations about it. Any projections, opinions, assumptions or estimates used are for example only. You & your advisors should conduct a careful independent investigation of the property to determine the property's satisfaction to your needs.

© Woodford Commercial Real Estate.



**Woodford**  
Commercial Real Estate

For Further Information  
Please Contact

**HAL PALMER** | Associate Broker

hal@woodfordcre.com

Suite 208, 1717 Olympia Way  
LONGVIEW WA 98632

P 360.501.5500 ■ F 360.501.6051

# FOR LEASE

160 N. Huntington Road  
CASTLE ROCK WA 98611

FLOOR PLANS



**For Further Information Please Contact**

**HAL PALMER** | Associate Broker

[hal@woodfordcre.com](mailto:hal@woodfordcre.com)

Suite 208, 1717 Olympia Way,

LONGVIEW WA 98632

**P** 360.501.5500 ■ **F** 360.501.6051

[www.woodfordcre.com](http://www.woodfordcre.com)