

FOR SALE

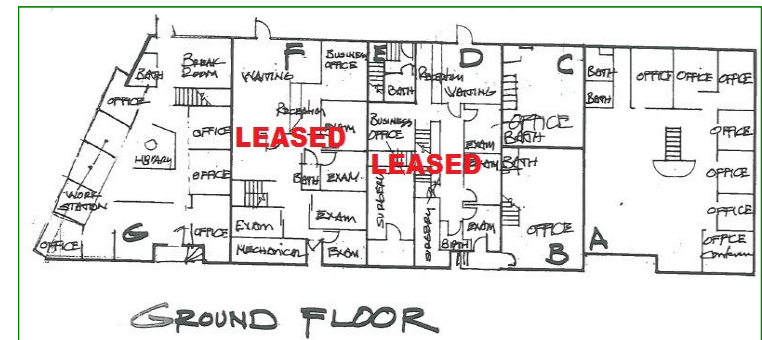
1106 Douglas St. Longview WA

PROPERTY DEMOGRAPHICS

- PRICE: \$750,000
- TAX PARCEL ID: 0-8757
- POPULATION: 50,908 -3 Mile
- HOUSEHOLD: 20,446 - 3 Mile
- AVG. INCOME: \$55,645 -3 Mile
- BUILDING SIZE: 12,439 SQFT

PROPERTY FEATURES

- For Sale:
- This prestigious professional building with current medical and professional tenants.
- Building is made up of office and medical build outs.
- 33 dedicated parking spaces plus public spaces.
- Building currently has 3 long term tenants, owners willing negotiate leasing back vacant suites.
- 8.3 CAP rate based on current tenants and asking rents.
- Floor plans available.
- Property also available for lease.
- Motivated owners makes this a must see!



Woodford

Commercial Real Estate

For Further Information

Please Contact

Chris Roewe | Partner
chrisroewe@hotmail.com

208 VINE ST

KELSO WA 98626

P 360.501.5500 ■ F 360.501.6051

www.woodfordcre.com

The information contained herein has been obtained from sources we understand to be reliable. Whilst we do not doubt its accuracy it has not been verified & we make no guarantees, warranty or representations about it. Any projections, opinions, assumptions or estimates used are for example only. You & your advisors should conduct a careful independent investigation of the property to determine the property's satisfaction to your needs.

© Woodford Commercial Real Estate.